

“The most straightforward way to do Incident Investigation and Analysis”

RPS

BlackBox

It is Easy to be an Expert: get more significant output faster and simpler with BlackBox

WHAT IS BLACKBOX?

BlackBox is a software tool that guides you through all phases of incident investigation and analysis. It represents a question wizard that leads you through an accelerated investigation process of less than an hour, starting with basic investigation information, an investigation diagram, to recommendations and an automatically generated report. It is a very useful tool for low risk incidents and near misses. BlackBox is based on the TOPSET® incident investigation methodology. BlackBox does most of the legwork for you, leaving you able to focus on the critical thinking that goes into an investigation. Because of BlackBox its simplicity and ease of use, people with any level of computer experience can use it.

TOP-SET® Investigation: *Prevention by Investigation*

- Uncovers more relevant facts during an investigation by pointing out every factor that could have played a role.
- The solid investigation basis required for sound Tripod Beta analysis by providing better quality data.

Root Cause Analysis: *Getting to the bottom*

- Root Cause Analysis is a simple and straightforward incident analysis technique, which provides a lot of freedom in explaining the causality in the incident: what caused what?
- The Root Cause Analysis aims to get to the bottom of your incident. When knowing and removing the actual root causes, similar and more incidents can be prevented.

INNOVATIVE FEATURES

The Power of TOP-SET

BlackBox implements the renowned TOP-SET Incident Investigation methodology

Professional Guidance

BlackBox provides you with the right questions at the right times. Assisting Tips and Hints appear when they are most useful

Structured Analyzing

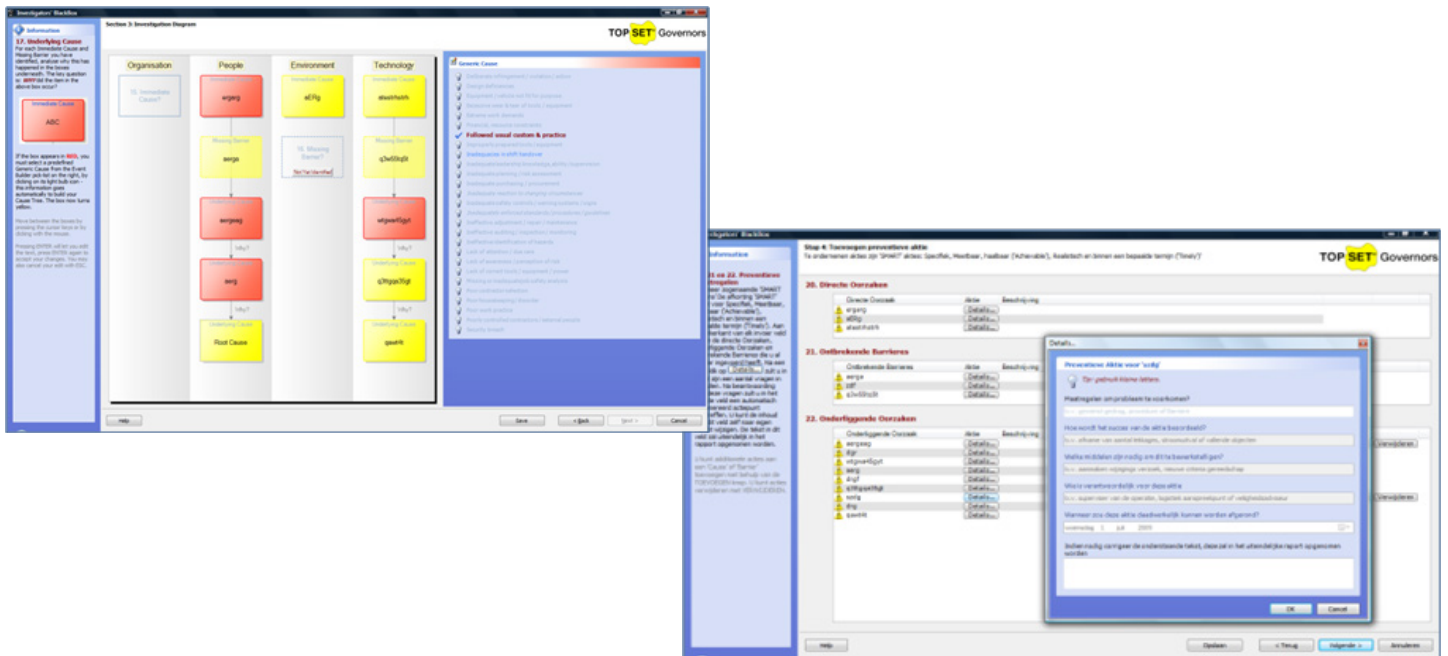
Complete lists of indicators per category help you structure your analysis making it possible to compare different incidents and discover trends

SMART Solutions

The best way to make suitable and workable actions to prevent future incidents: Specific, Measurable, Achievable, Realistic and Timely

Automatic Reporting

Blackbox automatically creates a clear and standardized report, including an incident report, a cause tree and recommendations



Simple Incident Investigation & Analysis Solution

- **Live Help function** – The Help function will guide you through the process step by step, providing clear explanation and useful tips and hints.
- **Effective and Efficient** – Doing incident investigation with BlackBox is so fast and easy, it will free up more time for the user to think their way through the investigation. This will contribute to a safer working environment.
- **Ease of Use** – BlackBox is so easy to use that it can be used both by people with little or no experience with incident investigation as well as very experienced incident investigators.
- **Experience based assistance** – Based on over twenty years of incident investigation experience TOP-SET® created a list of generic causes that will structure your analysis process. It will provide you with all the significant indicators that could have played a role in the incident. This will save you time since the prework is already done for you!

Training and Demonstrations

- **To fully comprehend the methods behind the software, training is recommended. Please contact us for more information about training possibilities.**
- **Please contact us for a free online demonstration and/or a free software trial**

RPS Australia Asia Pacific

BRISBANE

743 Ann Street Brisbane,
Fortitude Valley, QLD 4006
Phone: +61 7 3237 8899

PERTH

38 Station Street, Subiaco, WA 6008
Phone: +61 8 9211 111

MALAYSIA

Unit 5a, Level 5 Manara Chan
138 Jalan Ampang, Kuala Lumpur,
Malaysia 50450
Phone: +60 3 2732 8272

Email: bowtiexp@bowtiexp.com.au

System Requirements

Windows XP/Windows Vista
Intel Pentium processor or compatible (800MHz or greater)
512MB RAM or greater
200MB disk space or greater
SVGA (1024x768/16 bit color or greater)